

CBT Class-VII September'2023

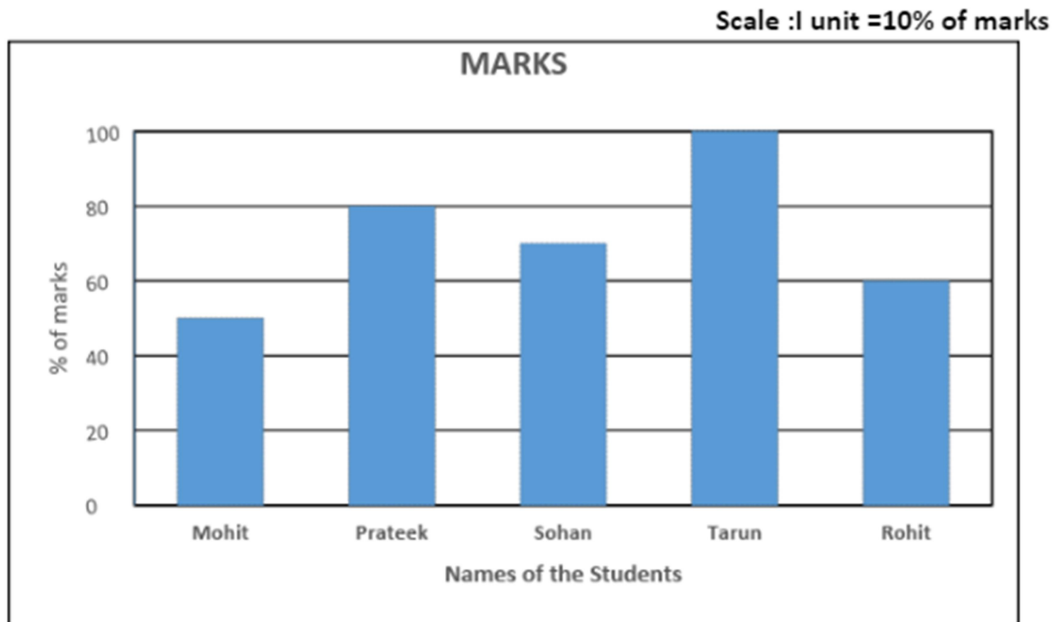
Mathematics

Question 1 A Seminar Hall has seats for 820 persons. At a recent seminar start, one person guessed it was $\frac{3}{4}$ full, another that it was $\frac{2}{3}$ full. The ticket office reported 648 sales. Which person (first or second) made the better guess?

Ans: The first person guessed better.

FEEDBACK:- 615 is more close to 648 than 547

Question 2 Given below is a bar graph representing the percentage of marks obtained by five students in a test studying in NAMAN high school. What is the average percentage of marks obtained by the 5 pupils in the test?

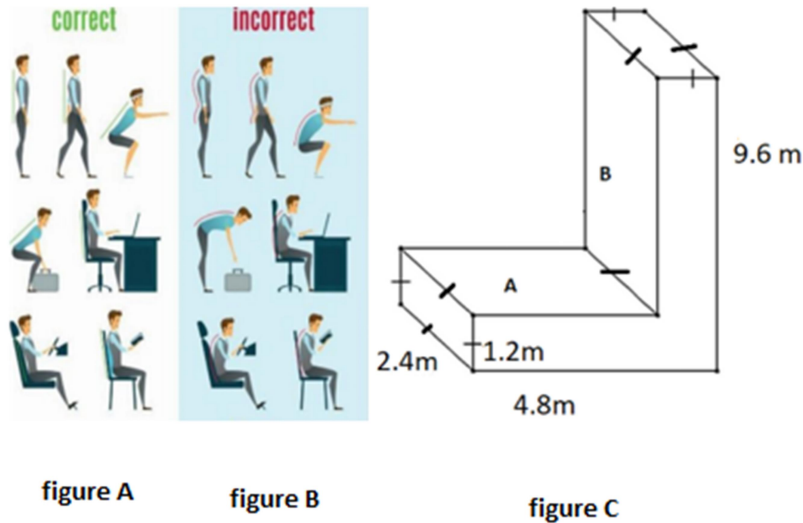


Ans: 72%

FEEDBACK:- BY USING FORMULA OF AVERAGE

Question 3 Sitting postures in class/ office needs attention as they can cause problems to your body in long run. Given below are few postures. To keep people in proper sitting positions people in olden days used to make chairs that were perfectly in L shape. Later they found it hard to sit and introduced cushions. The word cushion comes from middle east cushin& from Anglo-French Cussin. The first known use of the word cushion was in the 14th century. It may be of different sizes and styles as per the need of the furniture's shapes .Here two cuboidal shaped cushions are combined and a 'L' shaped chair cushion is made as shown above (Figure-c) with given dimension(L,B ,H for cuboid 'B' &l,b,h for cuboid 'A')

What will be the quotient When the longest dimension of cushion 'A' is divided by the longest dimension of cushion 'B'?



Ans: $\frac{1}{4}$ **FEEDBACK:- FIND THE RATIO OF THE DIMENZION OF CUSHION A AND B**

Question 4 I am a number. If you multiply me by 3 and subtract 2 from me, I become 10 more than my double. What is my value?

Ans: 12 **FEEDBACK:- $3X - 2 = 10 + 2X$**

Question 5 What is the total number of natural number solutions to $3X + 2Y = 50$ if $X < Y$?

Ans : 4 **FEEDBACK:- $3X + 2Y = 50$**

Question 6 A test has 50 questions. A student scores 1 mark for a correct answer, $-\frac{1}{3}$ for a wrong answer, and $-\frac{1}{6}$ for not attempting a question. If the net score of a student is 32, the number of questions answered wrongly by that student cannot be less than

Ans: 3 **FEEDBACK:- $x = \frac{242}{7} + \frac{y}{7} = \frac{(242+y)}{7}$**

Question 7 The Special roulette wheel has 38 divisions, where numbers from 1 to 36, 0 and 00 can be found. Numbers from 1 to 36 are alternately colored in red and black, while the single zero and the double zero are marked in green. The main objective, which any playerpursuits, is to predict, which numbered pocket the roulette ball is going to settle into. In order to do that, all players make bets on a particular number,after which the dealer turns the roulette wheel in one direction and spins the roulette ball in the opposite. Once the ball finds its way into the pocket with that particular number, the respective players get paid. All 38 numbers are identically arranged on the wheel, thus, the ball has an equal probability to settle in any of the divisions. What is the probability of the ball settling into an even natural number less than 30 ?



Ans : 7/19

FEEDBACK:- USING PROBABILITY FORMULA

Question 8 A survey was conducted for the students studying in class VII of VIDHYA New school for the different modes of transport available for them to travel. Sanju and Manju started from their house to go to school .They had four different options of Mode of transport available for them to travel

The Speed of the bus in Km/h is

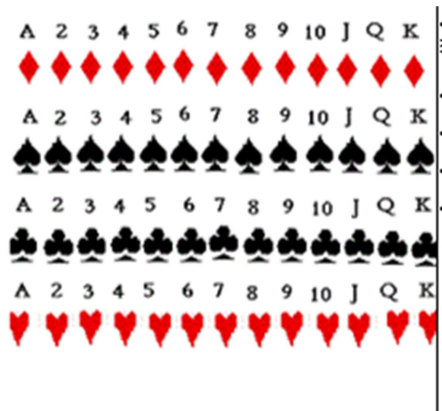
Mode of Transport	Distance Covered (in Km)	Time Taken (in hours)
Walking	40	10
Cycle	100	20
Car	600	10
Bus	500	25

Ans : 20

FEEDBACK:- USE FORMULA OF SPEED

Question 9 In a famous Game zone different games are played .One of the game is of playing Cards .Ram and Rama are playing with well shuffled pack of 52 cards .It has 4 suites Diamond, Spade ,Clubs, Hearts as shown below

A card is drawn at random from a deck of cards. Find the probability of getting a King of spade



Ans : 1/52 **FEEDBACK:- USING PROBABILITY FORMULA**

Question 10 Suraj and sunita are students of class 7th. They are solving problems on simple equations. For developing the interest among students, teacher had a new idea. He asked the students to solve the following equations and promised them to give the thing they make out by arranging all the variables of the given family of equations:

$$2m+5=13, \quad 5g-3=12, \quad 4n=20, \quad 12a+3=27, \quad 8+'o'=14$$

What are the solutions of equations asked by the teacher?

Ans: $m=4, g=3, n=5, a=2, o=6$ **FEEDBACK:- SOLVE THE GIVEN EQUATIONS TO FIND ANSWER**

CBT Class-VII September'2023

SCIENCE

Q no.11.It is advised to rub baking soda on ant bite because

Ans : It is a base which neutralise the effect of formic acid released by ant

Feedback : Baking soda contains base which nuteralise affect of formic acid.

Qno.12 The result of adding acid and base is always

Ans: Salt and water

Feedback: it is a neutralisation reaction which is exothermic, gives salt and water.

Q13.Which of the following gives correct increasing order of acidic strength

Ans: Water<acetic acid<hydrochloric acid

Feedback: Water contains minimum number of hydrogen ion and hydrochloric acid contains maxmimum number of hydrogen ion.

Q14.Under what condition a farmer would treat the soil of his field with quick lime or slaked lime or calcium carbonate

Ans: Excess acidic condition of soil.

Feedback: To nuteralise excess acid condition farmers use quick lime.

Qno.15 which of the following statements is correct for acid

Ans : Sour in taste and change colour of methyl orange into red

Feedback: Due to hydrogen ion acid gives red colour with methyl orange.

Q16 .Light a candle and place one hand above the flame and another on the side of the flame.Do you felt any difference in degree of hotness between these two hands.what is the method of transfer of heat in this activity.

Ans: The hand above the flame is more hot by the method of convection

Feedback: Convection is the method of heat transfer in liquid and gases medium.

Q17 Paheli and Bhoojo measured the body temperature. Paheli found temperature 98.6 degree F and Bhoojo recorded 37degree celcius.Which of following statements is correct.

Ans: Both have same normal body temperature

Feedback: 98.6 degree F = 37 degree C .

Qno.18 The cool air blows during day time from sea to land is called

Ans: Sea breeze

Feedback : Due to difference in air pressure air moves from sea to land.

Qno.19 At a camp site there are two shades-one made of black fabric and other made of white fabric.which one will you prefer for resting on hot summer afternoon.Give reason

Ans: White fabric tent because it is good reflector of light

Feedback: White colour absorbs very less heat than any other colour.

Q no.20 The liquid metal found in thermometer

Ans: Mercury

Feedback :mercury is only metal liquid at room temperature.

CBT Class-VII September'2023

Social science

Question 21 - How the sudden movement of plates affect the earth?

Ans and feedback: It causes mass destruction as sudden movements of the earth cause a tremble in the earth's surface which is caused by the sudden dislocation or movement of tectonic plates within the surface of the earth. These movements are commonly known as earthquakes. Earthquakes are measured on a Richter scale.

Question 22 - There are three types of earthquake waves. S waves are the _____

Ans and feedback: Transverse waves. This means is that the oscillations of an S wave's particles are perpendicular to the wave propagation's direction.

Question 23 - Which of the following is affected by the Exogenic forces?

Ans and feedback : Glaciers. Exogenic are external forces that operate and act on the surface of the Earth. These forces are also known as 'destructive forces' as they at times result in destruction of the existing landforms through weathering and erosional activities.

Question 24 - People believed that nobles inherited their rights to govern, because they were born in certain families. Hence Privileges claimed on account of birth is –

Ans and feedback: Birth right. Birthright Privileges claimed on account of birth. For example, people believed that nobles inherited their rights to govern, because they were born in certain families

Question 25 - He started his career as the manager of a small territory for his uncle in Bihar and eventually challenged and defeated the Mughal emperor Humayun (1530–1540, 1555–1556). Later he captured Delhi and established his own dynasty and ruled for only fifteen years (1540–1555). Identify the ruler –

Ans and feedback : Sher Shah Sur. Sher Shah was the founder of Sur Dynasty. He was given the title Sher Khan for his bravery under the Afghan Rule of Bihar. Though his rule lasted for only 5 years, he has organized an excellent administrative system.

Question 26 - Like the earlier Sultans, the Khalji and Tughluq monarchs appointed military commanders as governors of territories of varying sizes. These lands were called iqta and their holder was called iqtdar or muqti. The harsh conditions of service were rigorously imposed during the reigns of Alauddin Khalji and Muhammad Tughluq to control the muqtis.

How did the control over muqtis became effective. Identify which among the following reason is incorrect?

Ans: Their office was inheritable. the Khalji and Tughluq monarchs appointed military commanders as governors of territories of varying sizes. These lands were called iqta and their holder was called iqtadar or muqti. The duty of the muqtis was to lead military campaigns and maintain law and order in their iqtas. In exchange for their military services, the muqtis collected the revenues of their assignments as salary. They also paid their soldiers from these revenues. Control over muqtis was most effective if their office was not inheritable

Feedback:

Question 27 - There are diseases that are spread from one person to another in many ways such as through water, food , air, etc.

How can we recognise them?

Ans and feedback : Communicable disease. Communicable diseases are an infectious disease, which spread from a person to person and are caused by the pathogens.

Question 28 - There has been a phenomenal advancement in medical sciences whereby many new technologies and treatment procedures are available in the country. With all the positive developments in field of medical health still we are not able to provide proper healthcare facilities to people. This is the paradox – something that is contrary to what we would expect. Our country has the money, knowledge and people with experience but cannot make the necessary healthcare available to all.

In India, with respect to health facilities, we are in a situation where -

Ans and feedback : Private services are increasing but public services are not increasing. Hence a lot of people are not able to afford quality services due to lack of money.

Question 29 - According to our Constitution, it is the primary duty of the government to ensure the welfare of the people and provide health care facilities to all.

If a hospital cannot provide timely medicine, then which right is violated.

Ans and feed back: Right to life. Considering the case of the Kerala government, state governments can empower local panchayats by funding them, in the process making them a self-reliant healthcare unit. The government is responsible for making the medical facilities available for the general public at an affordable cost in a proper and planned manner.

Question 30 - The public health service is a chain of health centres and hospitals run by the government. They are linked together so that they cover both rural and urban areas and can also provide treatment to all kinds of problems.

Basic health unit in urban areas is called _____

Ans feedback : Community health centres. These centers provide basic health facilities in urban areas.